



# DATAFIELD

## Datafield Quality System





## Our Certification

---

### System Certified:

- IATF 16949:2016 Quality Management System ( QMS ) for Automotive Product
- ISO 9001:2015 Quality Management System ( QMS )
- ISO 14001:2015 Environment Management System ( EMS )

### Products Certified:

- Verband Deutscher Elektrotechniker (VDE)
- Underwriters Laboratories of USA & Canada (UL)
  - Wire Harness
  - Communication Circuit Accessories
  - Communication Circuit Components
  - Appliance Wiring Material
- Canada Standard Association (CSA)
  - Telecommunication Equipment - Cords & Cordsets
- China Compulsory Certification (CCC)
  - PVC Flexible Cable & Cordsets



## Our Certification

**Quality Management System  
(QMS) for Automotive Product  
ISO/TS 16949  
Since 2007**

**(Latest version: IATF 16949:2016)**



**Quality Management System  
(QMS)  
ISO 9001  
Since 1999**

**(Latest version: ISO 9001:2015)**



**Environmental Management System  
(EMS)  
ISO 14001  
Since 2001**

**(Latest version: ISO 14001:2015)**





## Our Certification

Wire Harness for USA &  
Canada



UL File no. E193713

UL Appliance Wiring  
Material



UL File no. E145335

VDE Certificate

**VDE**



VDE Certified no.  
40030476

Communication Circuit CSA



CSA File no. LR  
93067

UL Communication  
Circuit Accessories &  
Component



UL File no.  
E189743

China  
Compulsory Certification





# Quality System



DATAFIELD DONGGUAN



### ERP Introduction

- DATAFIELD, Self developed ERP software.
- [Real time incoming data for quick retrievable and monitoring](#)
- [Up-to-date documentation control drawing, BOM, PPAP, FMEA ECN and customer drawing](#)
- FIFO control on incoming material via 2D barcode (QR Code)
- [Outgoing report](#)
- Mobile device Apps accessible (in progress)

### Quality Control

- [Incoming sampling with AQL 0.25](#)
- [Sub-tier supplier audit](#)
- [Production start up with 1<sup>st</sup> piece buyoff](#)
- [Control plan with approval from customers](#)
- IPQC routine inspection every 2 hours
- [Cpk monitoring](#)
- [FQA outgoing sampling with AQL 0.25](#)
- OBA for critical products
- Customer buyoff
- [KPI monitoring on LAR, DPPM, customer return etc](#)
- [GE, LEGO, IRT, Zebra Products Quality Performance](#)
- [Quality Capabilities](#)
- [Continuously improvement](#)





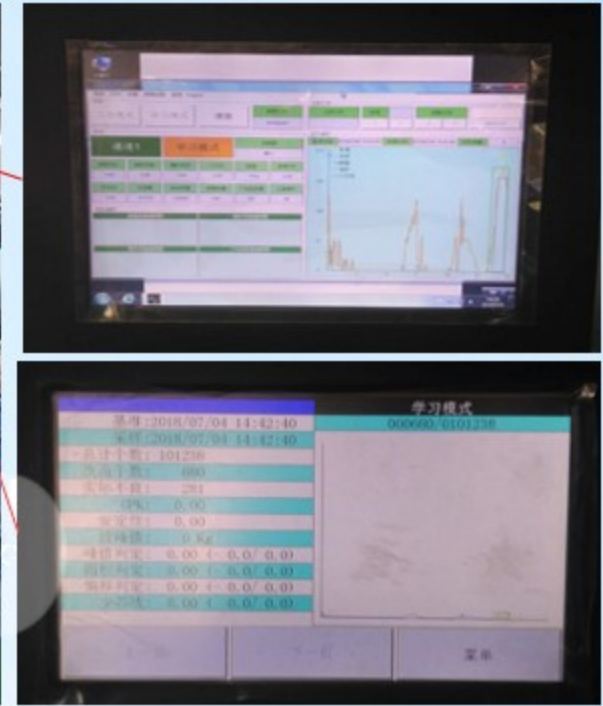
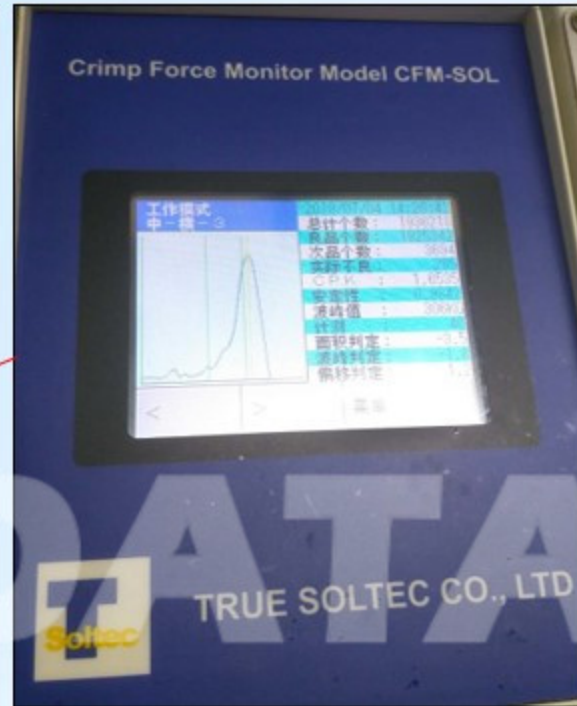
# Quality Capabilities



DATAFIELD DONGGUAN



## QUALITY MONITORING ) Terminal Crimping – Crimp Force Monitor, CPK Control.

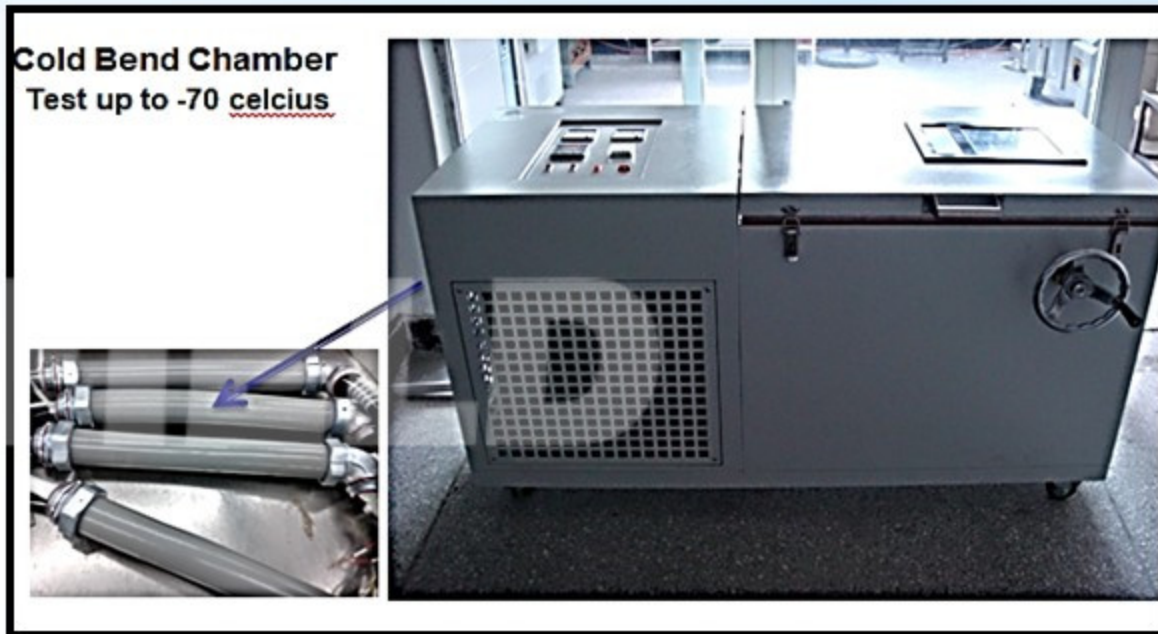


- Crimp Force Monitor to control the CPK of every single crimping of wire terminal.
- DF Auto terminal crimping machine and Manual terminal crimping machine, attached with the crimp force monitor to control the CPK of every single crimping of wire terminal. If the crimp force is not accurate and the CPK is lower than 1.66, the machine will be idle and machine operator, technician and IPQC need to study together the crimping condition.



# LABORATORY CAPABILITY

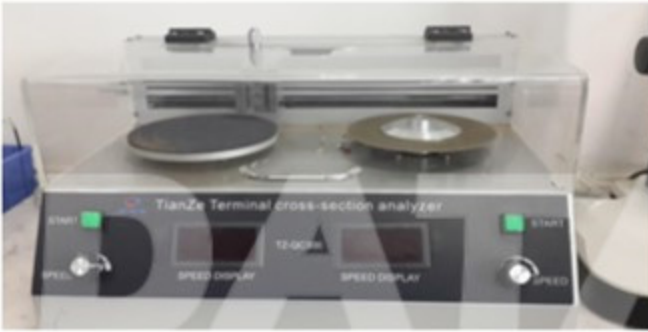
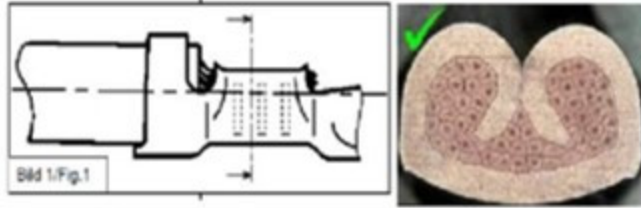
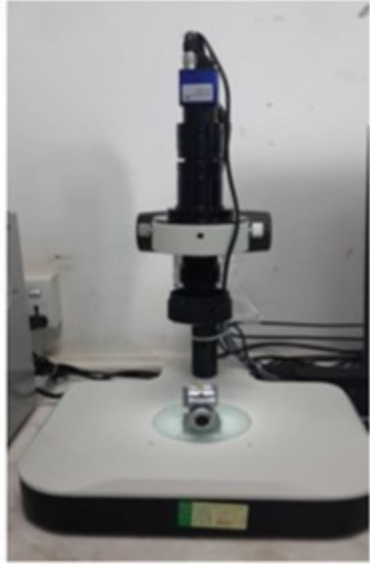
Wire & Cables Laboratory Test according to Customer & Industry Requirements.



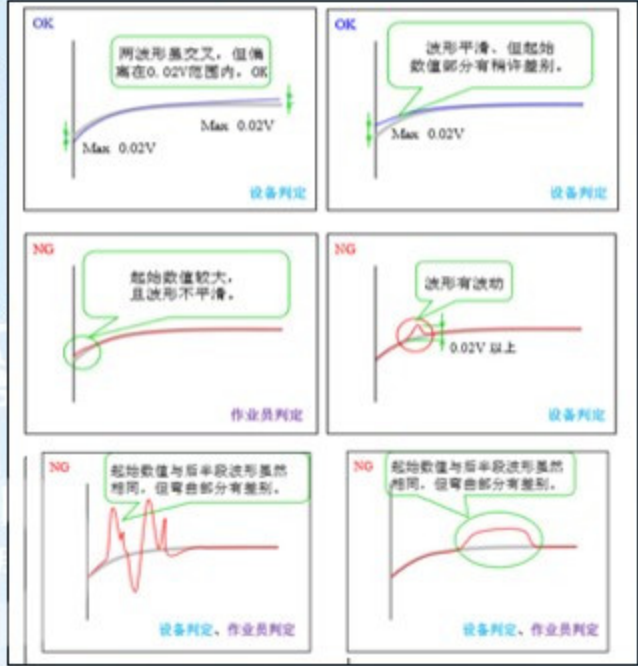
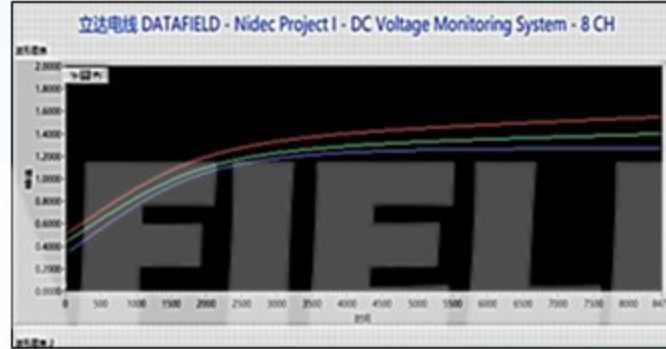
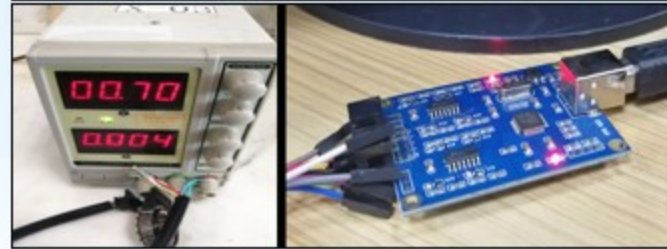


# QUALITY CONTROL – 1) Terminal Cross Section Analysis 2) Voltage Vs. Temperature Change Analysis

## Terminal Cross-Section Analyzer



## Voltage Vs. Temperature Change Analysis



1) Analysis according to **IPC IPC/WHMA-A-620 Requirements and Acceptance for Cable and Wire Harness Assemblies**, terminal cross sectional analysis able to justified the quality of terminal crimping.

2) DF also able to analyze the terminal crimping significant result of voltage change according to temperature change. The significant voltage changes, due to temperature changed, might directly affected the performance of the products where it might lead to intermittent malfunction (INT), thus, caused to the big impact especially in vehicle & industrial operation devices. This analyzer able to justified the terminal crimping conditions and eliminate the malfunction of the product in use.



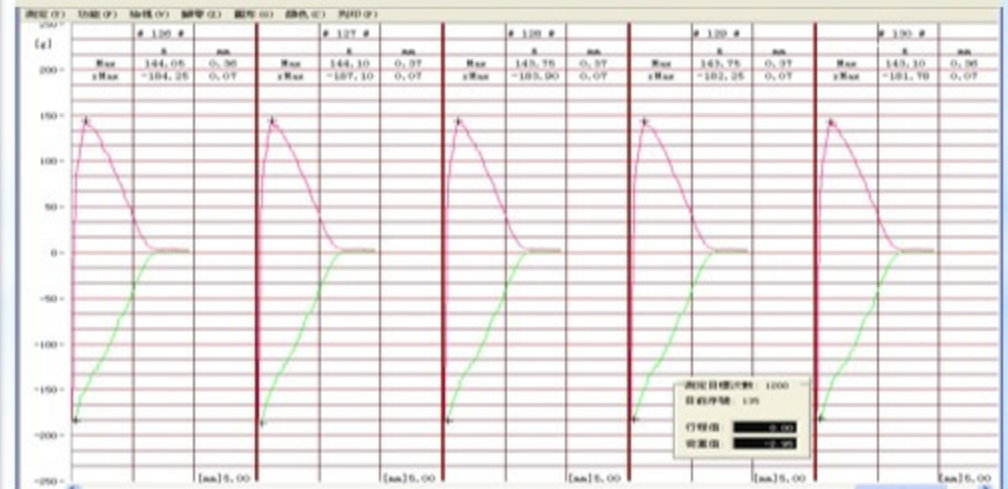
## TESTER MACHINE FOR TERMINAL PULL-PUSH TEST

Tester in place to ensure the terminal pull push test been analyzed effectively.



### 測定項目及規格設定:

測定項名稱	符號	荷重下限	荷重上限	行程下限	行程上限
最大荷重值(去)	Max	0	0	0	0
最大荷重值(回)	rMax	0	0	0	0
峰點荷重值(去)	Pk	0	0	0	0
峰點荷重值(回)	rPk	0	0	0	0
行程1測荷重值(去)	Lo1	0	0	0	0
行程1測荷重值(回)	rLo1	0	0	0	0
荷重1測行程值(去)	Ds1	0	0	0	0
荷重1測行程值(回)	rDs1	0	0	0	0





### Optical Measurement

Tester in place to ensure the precise dimension need to be measured to monitor the stability in the process effectively.



Function:

It mainly focus on the precise location and marked by CTQ in the drawing.



DATAFIELD

THANK YOU !

COPYRIGHT @ DATAFIELD INDUSTRIES H.K. LTD.  
2018.06.29

